



Headers and Transceiver Connection Details: PIC 16F84A Echo Link Interface

Revision: 0808

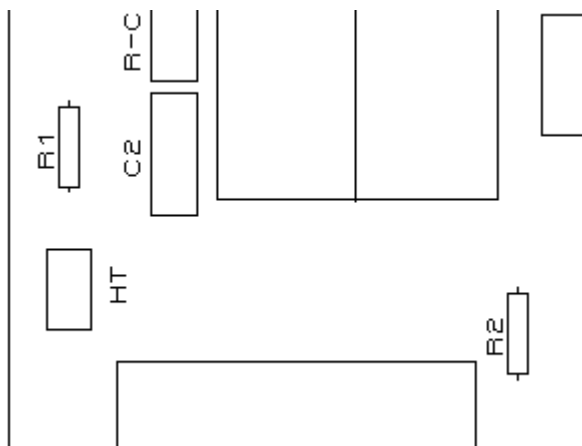
Fox Echo – K7

This document detail following assembly points:

- A. HT MIC PTT Resistor R1 & Header HT
- B. HQ1 & HQ2 Headers (For Optional AGC Card)
- C. COR & COM Headers
- D. Transceiver Connection details for DIN5

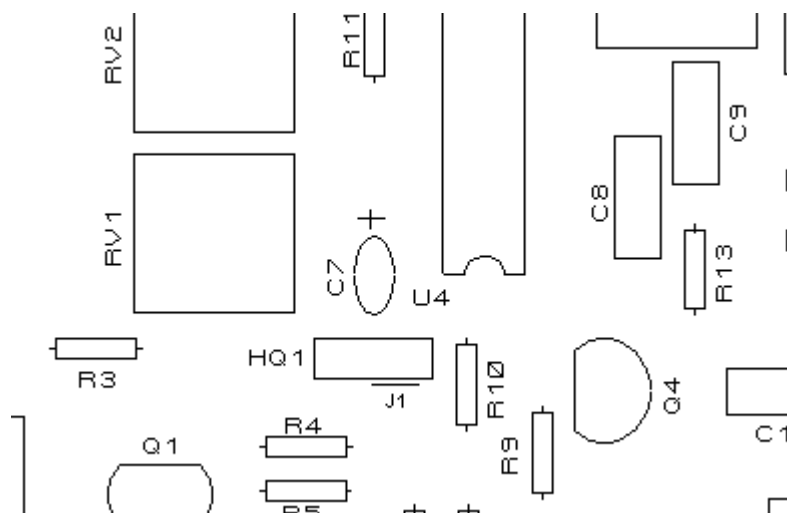
Headers:

HT:



If you wish to use a handy with this interface, install a shorting pin on this header to activate PTT thru microphone line.

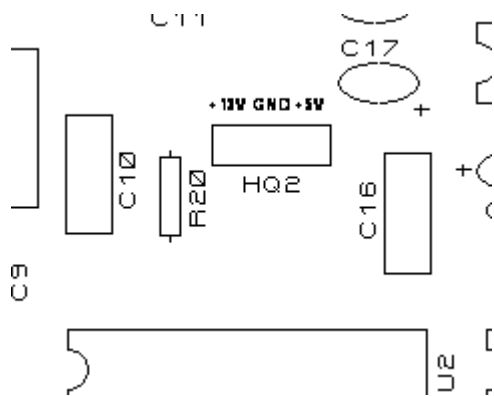
HQ1: Location



For No-AGC type of FoxEcho-K7, please install a shorting pin at HQ1: J1

This will pass received audio to interface.

HQ2: Location



This is a three pin 0.1IN female header with center pin ground and +12 & +5V DC available.

Only Ground & +12V are used for AGC card. Although +5V is available, it's not used in AGC card.

COM & COR: Location & Function

COM:

This header is provided to enable PTT operation by Echolink's PTT control. By default, interface PTT is ready to use.

Echolink: Shorting Pin at COM

PIC16F84A: No Shorting required

COR:

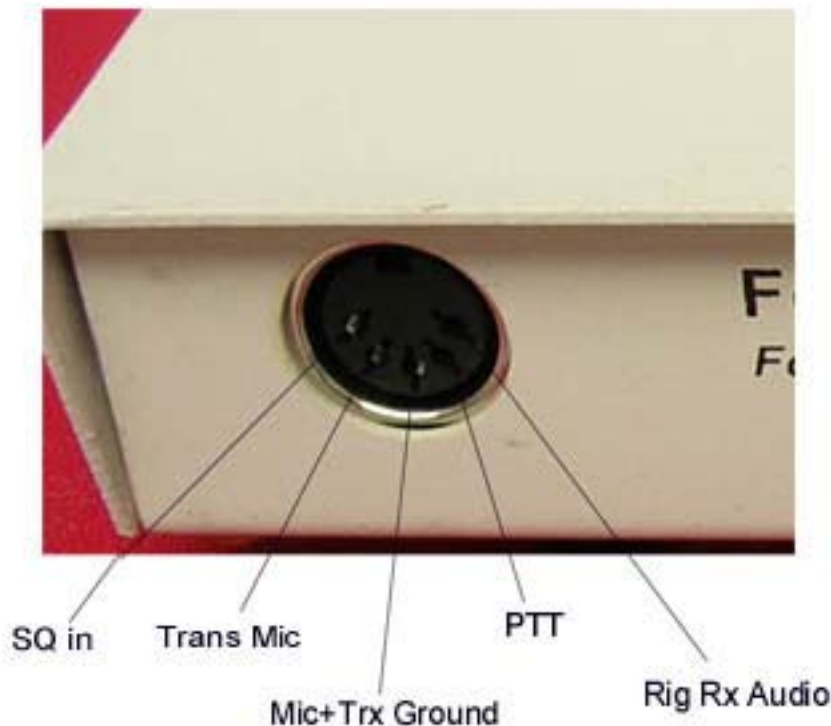
COR header selects between Normal and Inverted **CD** (Receiver Carrier Detect).

Normal: Shorting Pin Between – 2 & 3

Inverted: Shorting Pin Between - 2 & 1

Front Panel DIN5 Transceiver Connection:

While soldering the provided DIN5 Male connector, please follow above guideline for proper operation of this interface



Details:

1. SQ In = Transceiver squelch out. Normally +5V on squelch open
2. Trans Mic: Connect transceiver Microphone to this pin
3. MIC + Transceiver Ground
4. PTT: Connect Trx PTT here.
5. Rig Rx Audio: Receiver audio is connected here.

Please note that if you wish, transceiver receiver audio may be connected to J5 3.5mm socket at the back panel.

73s

Dinesh Gajjar / Updated: 28th August 08

Please Visit <http://www.foxdelta.com> for more details on this project